

INTRODUCTION (OURSELVES & PEDESTAL DIODE END-PUMP LASER MARKING MACHINE)

As one of the top manufacturers of laser machine in China, AmberMont dedicates itself into **researching & developing advanced laser technology and manufacturing a full range of laser machine, including laser marking machine, non-metal laser cutting machine & metal laser cutting machine, etc.** In addition, we also provide the automation solution on the base of laser technology, whoever you are, you can find the suitable machine from us...

Since the beginning, by committing to our clients, we only aim to provide the best laser machines and relative automation solutions as per different clients' demands. After years' development, we have transformed this commitment into our humble faith, which you will benefit from and the industry will be reshaped by.

Yet, true to our musical origins, no matter what business we take on or what country we do business in -- we seek to remain perfectly attuned to the set of shared values that define the world of AmberMont.

1 Our Culture

Our exclusive advantages, excellent technology, fabulous quality, premium service and outstanding enterprise culture, help us to gain the leading position of the laser industry.

1.1 Core Value

The code of conduct, core value, is based on our vision & mission statement as well as on our values.

In order to dedicate ourselves to our clients and make everything perfect, AmberMont business activities are founded on the following values: **honest, respect, openness, responsibility, total customer dedication and excellence in all we do.**



Each of us is responsible for knowing and adhering to the values and standards set forth in this code. We take the standards set forth in the code seriously and violations are cause for disciplinary action up to and including termination of employment or business relationships.

1.2 Philosophy

DMAIC has been a mature philosophy for enterprise management since 1990s, it has gradually become the standard for companies to perfect their effective and competent managements.

AmberMont embraced strategically the DMAIC management philosophy in 2013, introduction of this novel concept of management has driven us to run in a unique system of every aspects, like staffs training and internal communication.

1.3 Our mission

AmberMont aims to be the first choice of global clients, for this great mission, we'll be sticking to the principle of creating markets with outstanding quality and of establishing brand/reputation with great integrity.

AmberMont strengthens creative design and strict quality supervision to provide high performance laser machines to meet growing market demands. We always pay close attention to our clients' demands and provide global service & technical support. We regard staffs as the most valuable resources and inspires their growth by themselves.

2 Laser marking machine

Laser marking is one of the most popular non-touch laser processing technologies, laser marking is local irradiation in substances with high energy laser beam, make it evaporate rapidly or color change by physical or chemical reaction. These markers are permanent and hard to be removed. To compare with other marking methods, laser marking has many exclusive advantages as following:

	Laser	Ink Jet	Dot Peen	Chemical Etching
Marking Quality	excellent	average	poor	excellent
Marking Permanence	permanent	rubbed off easily	permanent	permanent
Marking Speed	fast	fast	slow	slow
Marking Method	non-touch	non-touch	touch	touch
Consumables	none	inks	stylus	chemical masks
Application	almost all	high speed moving parts	large / thick metal parts	thin metals & repeated marks
Integration	high flexible system, programming & remote operation	basic marking demands	basic marking demands	NA

AmberMont manufactures a full range of laser marking machine, including fiber laser marking machine, CO2 laser marking machine, Diode end-pump laser marking machine, UV laser marking machine & green laser marking machine, etc.

Since various industries have higher demand on high performance of laser processing equipments, as one of the top manufacturers of laser machine in China, we also provide automation solutions on the base of laser technology, whoever you are, you can find the suitable laser marking machine from us.

Attn.: Charlie Wen M.P.: +86 136 0179 0660

E-mails: charlie.v.k@ambermont.com; wi.charlie@yahoo.com

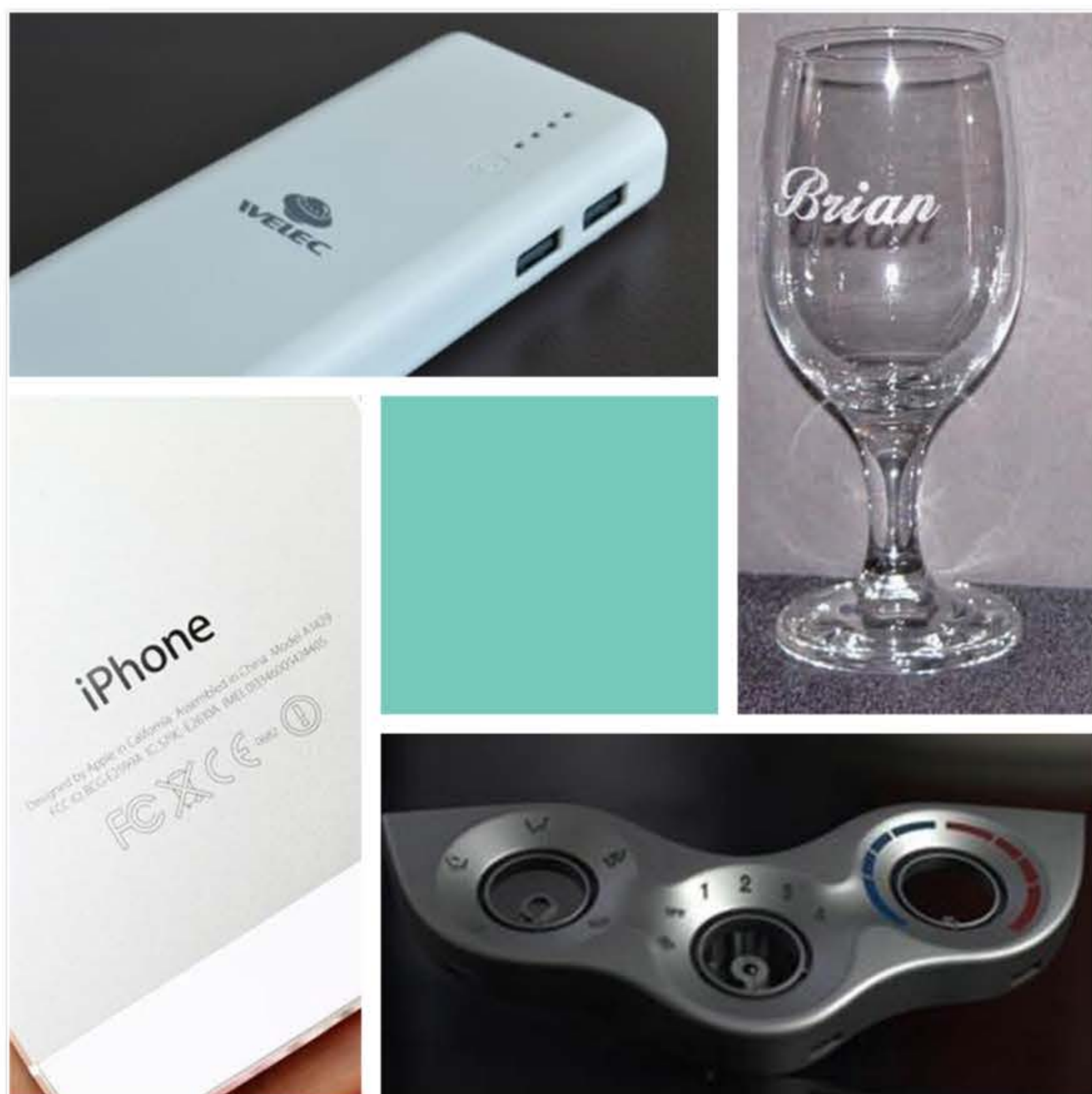
URL: www.ambermont.com SKYPE: charlie.wi (from Shanghai, China)

3 Our Products -- Pedestal diode end-pump laser marking machine

Diode laser marking machine includes diode side-pump laser marking machine and diode end-pump laser marking machine, it adopts semiconductor arrays as the laser source, the electro-optic conversion efficiency is more higher, reaching more than 40%; Overall performance is very stable, maintenance-free within 150,000 hours. Compared with other laser marking machines, it's more qualified for the ultra precision marking, special materials marking, but the price is relatively higher a bit.

Diode end-pump laser marking machine developed by AmberMont, integrates with highly standard configuration, it has been sold all over the world and very popular with our clients. Diode end-pump laser marking machine includes infrared, green and UV series, which is suitable for metal materials and many non-metal materials, widely used in electronic components, integrated circuits, hardwares, auto parts, plastic products and many other fields, especially for high quality laser precision micro-processing.

3.1 Product advantage



Permanent marks

Non-touch laser marking, be able to mark high precise design on tiny surface

No consumables

High electro-optic conversion efficiency, long service life, maintenance-free, operated in 24 hours and severe working environment



Attn.: Charlie Wen M.P.: +86 136 0179 0660

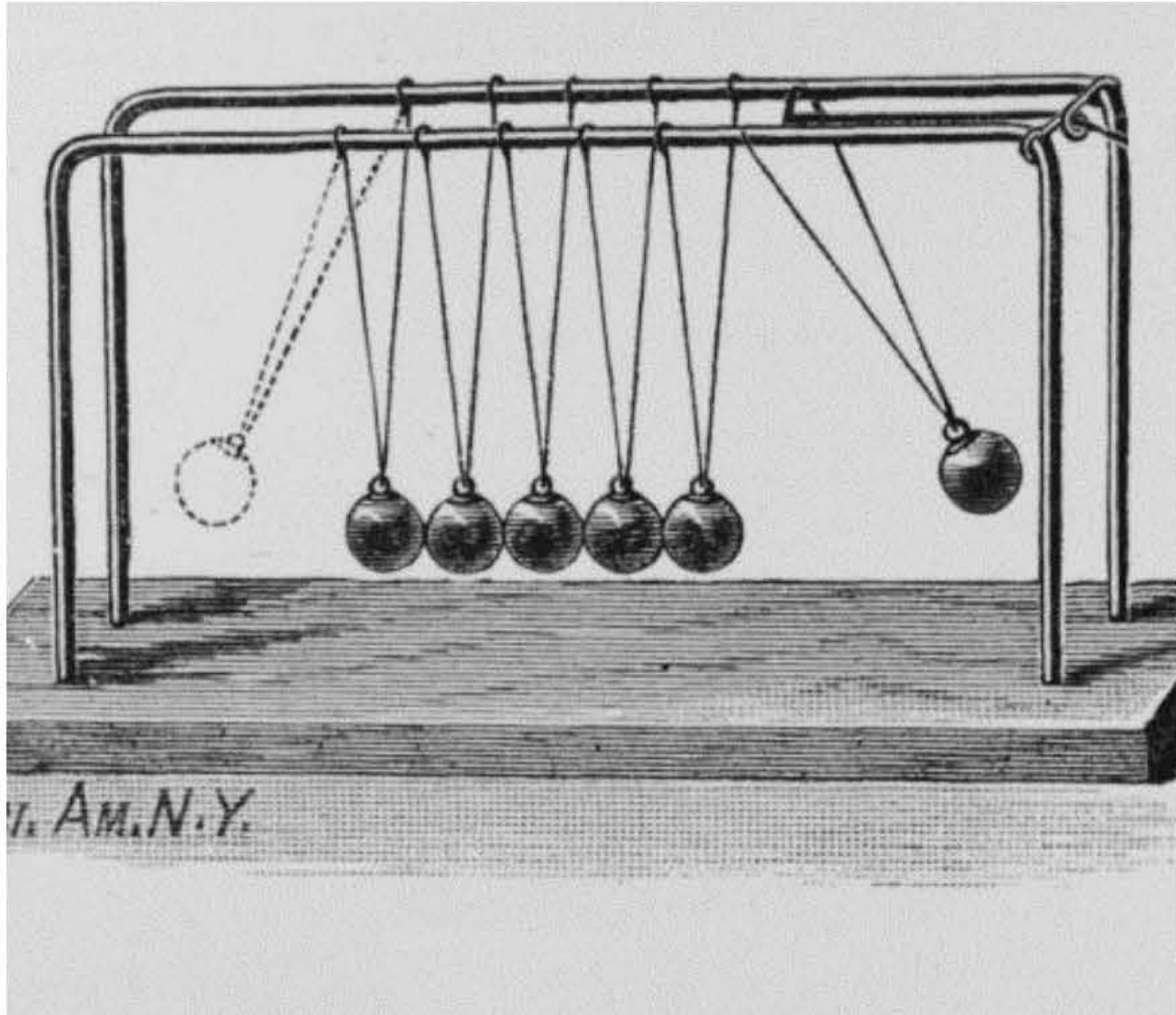
E-mails: charlie.v.k@ambermont.com; wi.charlie@yahoo.com

URL: www.ambermont.com SKYPE: charlie.wi (from Shanghai, China)

AMBERMONT GROUP CO., LTD.
SHANGHAI AMBERMONT MACHINERY EQUIPMENT CO., LTD.



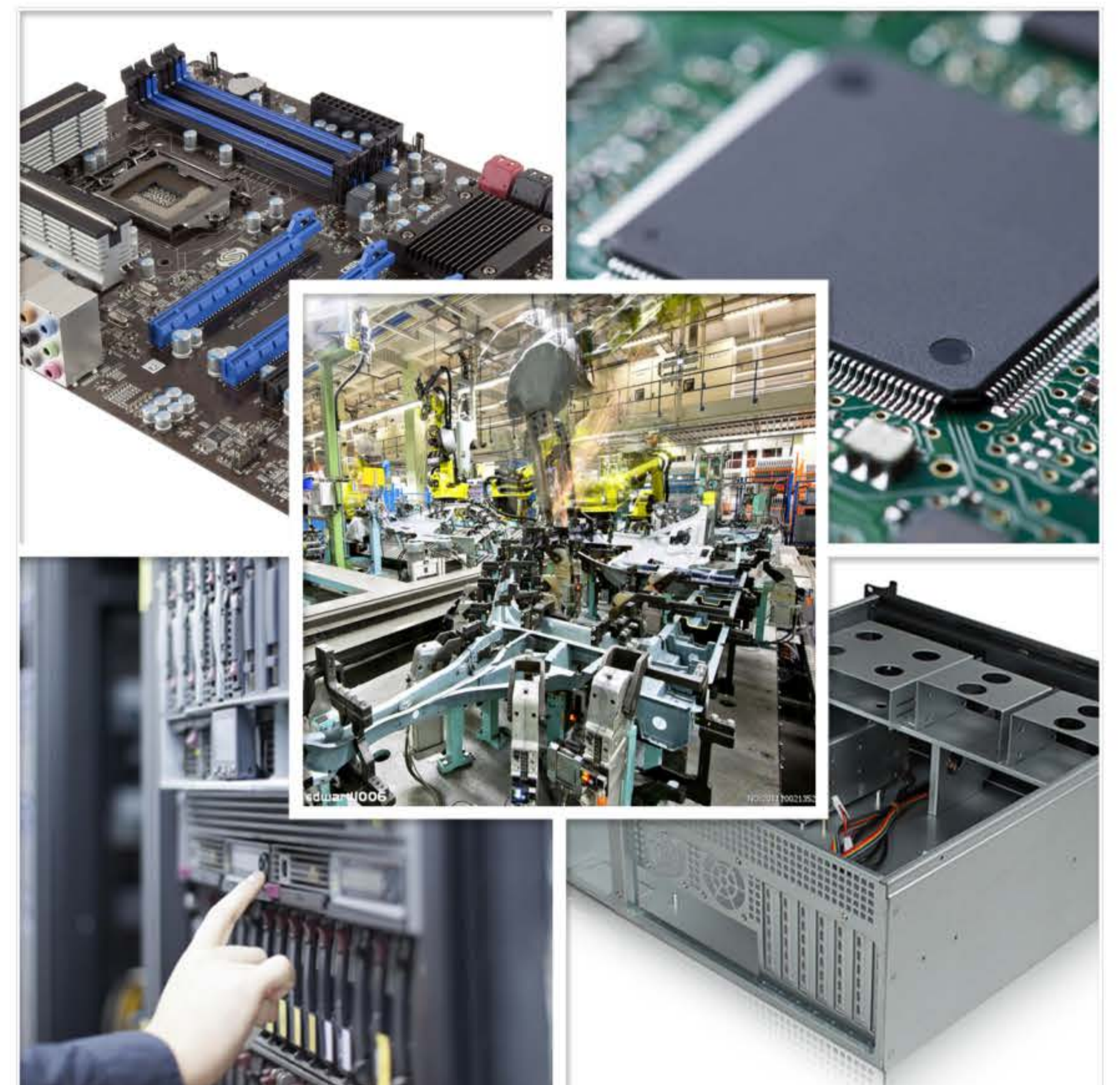
H.K.: FLAT/RM. 1611B, 16/F HO KING COMMERCIAL CENTRE, 2-16 FA YUEN STREET, MONGKOK, KOWLOON, HONG KONG
 999077/S.H. CENTER: 3/F., BLDG. #6, NO. 100 LANE 651 DONGXUE RD., SONGJIANG DISTRICT, SHANGHAI 201619, P.R. CHINA



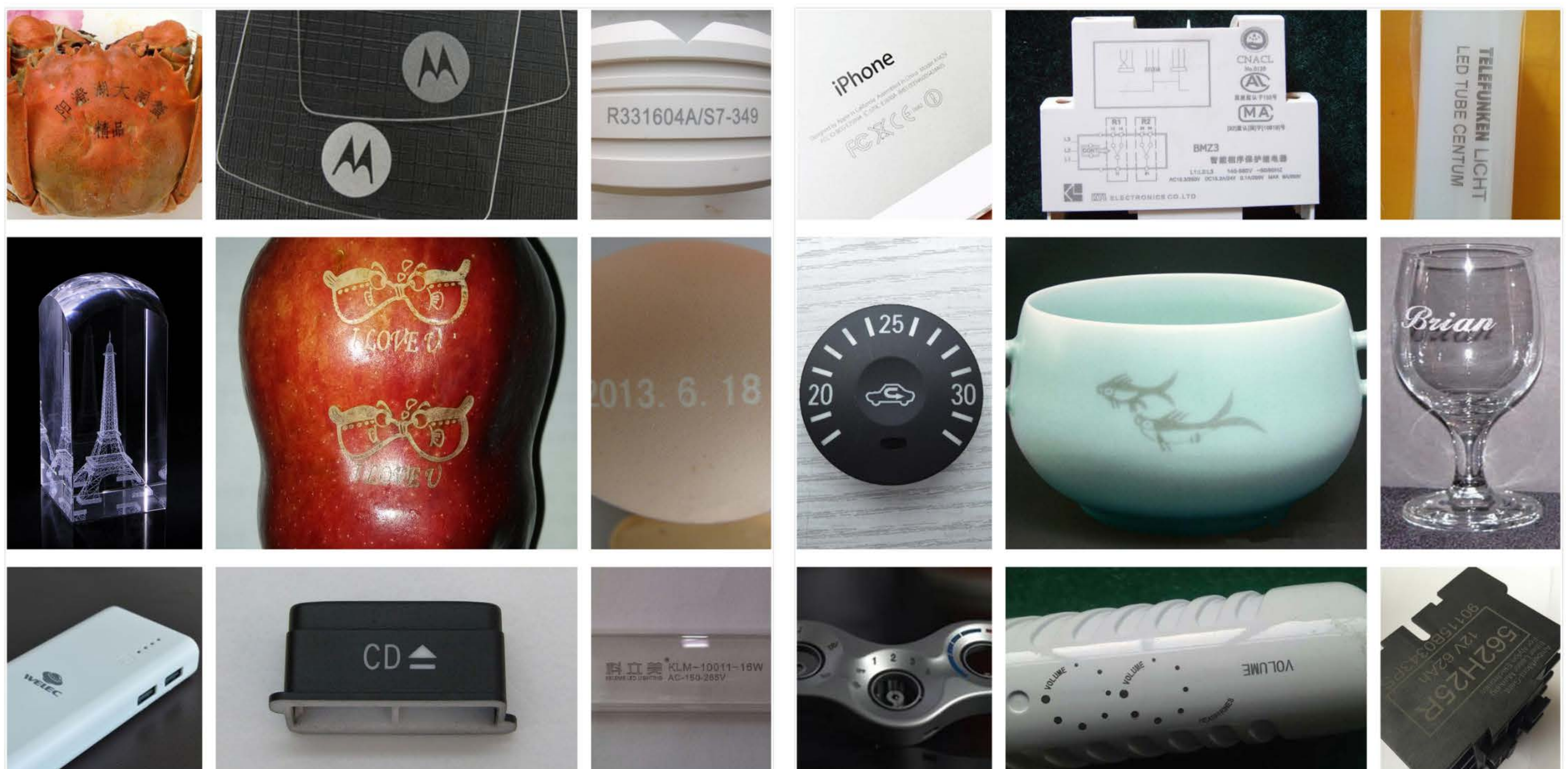
Long service life
 Maintenance-free within 150,000 hours, operated in
 24 hours and severe working environment

Intelligence & Automation

Powerful control system, be able to optimize all kinds of
 marking parameters according to different processes/materials



3.2 Sample display



Attn.: Charlie Wen M.P.: +86 136 0179 0660
 E-mails: charlie.v.k@ambermont.com; wi.charlie@yahoo.com
 URL: www.ambermont.com SKYPE: charlie.wi (from Shanghai, China)

3.3 Application

It's widely used in integrated circuits, electrical appliances, communications, precision instruments, electronic components, electrical industry, integrated circuits, hardware tools, auto parts, plastic products, crafts ornaments, etc, especially in special materials marking, cutting and processing, such as all kinds of glass, LCD panel, textiles, chip ceramics, semiconductor wafers, IC grains, sapphires, polymer films, etc.

4 Pedestal diode end-pump laser marking machine -- Model #: SGE-I/II



Diode end-pump laser marking machine is developed with the most advanced diode pump technique in the world, which directly immit pumping-light (808nm) to the end of laser crystal, output laser through optical lens and mark on the materials.

It has many advantages, such as short pulse, high quality laser beam, high peak power, exquisite marking, higher laser efficiency and more stable performance. It's not only suitable for metal marking, also for non-metal materials, such as ABS, Nylon, PES, PVE and so on. For some more sophisticated precision marking, it is particularly amazing, such as electronic components, plastic keyboard, integrated circuits (IC), electrical appliances, etc.

4.1 Features:

- According to human body engineering mechanics, the desktop design improves work efficiency of operators;
- Fully enclosed laser cavity design, dust-proof, frost-proof, long life, low maintenance costs;
- Innovative external cavity design, suitable for industrial production, strong anti-interference;
- Operated in 24 hours continuously and steadily in suitable temperature, complete processing orders efficiently and economically for customers;
- Integrated optical bench, no optical axis variation caused by transportation and vibration, parts replacement without any adjustments.

It is widely used in electronic components, integrated circuits, hardware, auto parts, plastic products, precision apparatuses and many other fields.

4.2 Tech parameters:

Models No.		SGE-I/II				
Optical Properties	Rated Output Power	8W	10W	15W	30W	40W
	Laser Operating Mode	Nd:YVO4 laser				
	Wavelength	1064nm				
	Repetition Frequency Range	1~40kHz	15~200kHz			
	Mode Quality (M ²)	TEM ₀₀ (M ² ≤1.2)				
	Output Beam Diameter	≤0.6mm	≤0.7mm			
	Pulse Width	<20ns@20kHz	<15ns@20kHz		<20ns@20kHz	
	Beam Directivity	<25μrad				
	Beam Stability	≤3%rms				
	Beam Divergence	≤1.5mrad				
	Polarization	>100:1				
	Cooling System	Internal air cooling or Water cooling				
Scanner Properties	Max. Marking Speed	≤15000mm/s				
	Repeatability	±0.002mm				
	Min. Line Width	0.05mm				
	Min. Character	0.17mm				
	Max. Marking Depth	0.8mm			1.0mm	
Marking Characteristics	Pilot Laser	Red laser/650nm/5mW				
	Focal Distance	160mm±2mm (standard&optional)				
	Marking Area	110*110mm (standard&optional)				
System Properties	Rated Power	0.7kW			0.9kW	
	Power Supply	AC 220V/50~60Hz				
	Working Environment	0~35°C, Humidity ≤90%				

5 Contact us

AmberMont has been aiming to develop and expand our markets on this blue lovely planet for years, advanced laser technology, high quality products and excellent service are what we are proud of and why we are the leading laser machines' manufacturer around the world.

We sincerely invite you to join us, as long as you identify with our enterprise culture. It is our best wish that we both will provide the most excellent products and services for every clients around the world. If you are willing to join us, **please contact us by e-mail (info@ambermont.com) and our service hotline: +86-21-6034 3841 (UTC+08:00, 9:00~17:00), we are always looking forward to cooperating with you.**

Attn.: Charlie Wen M.P.: +86 136 0179 0660
E-mails: charlie.v.k@ambermont.com; wi.charlie@yahoo.com
URL: www.ambermont.com SKYPE: charlie.wi (from Shanghai, China)